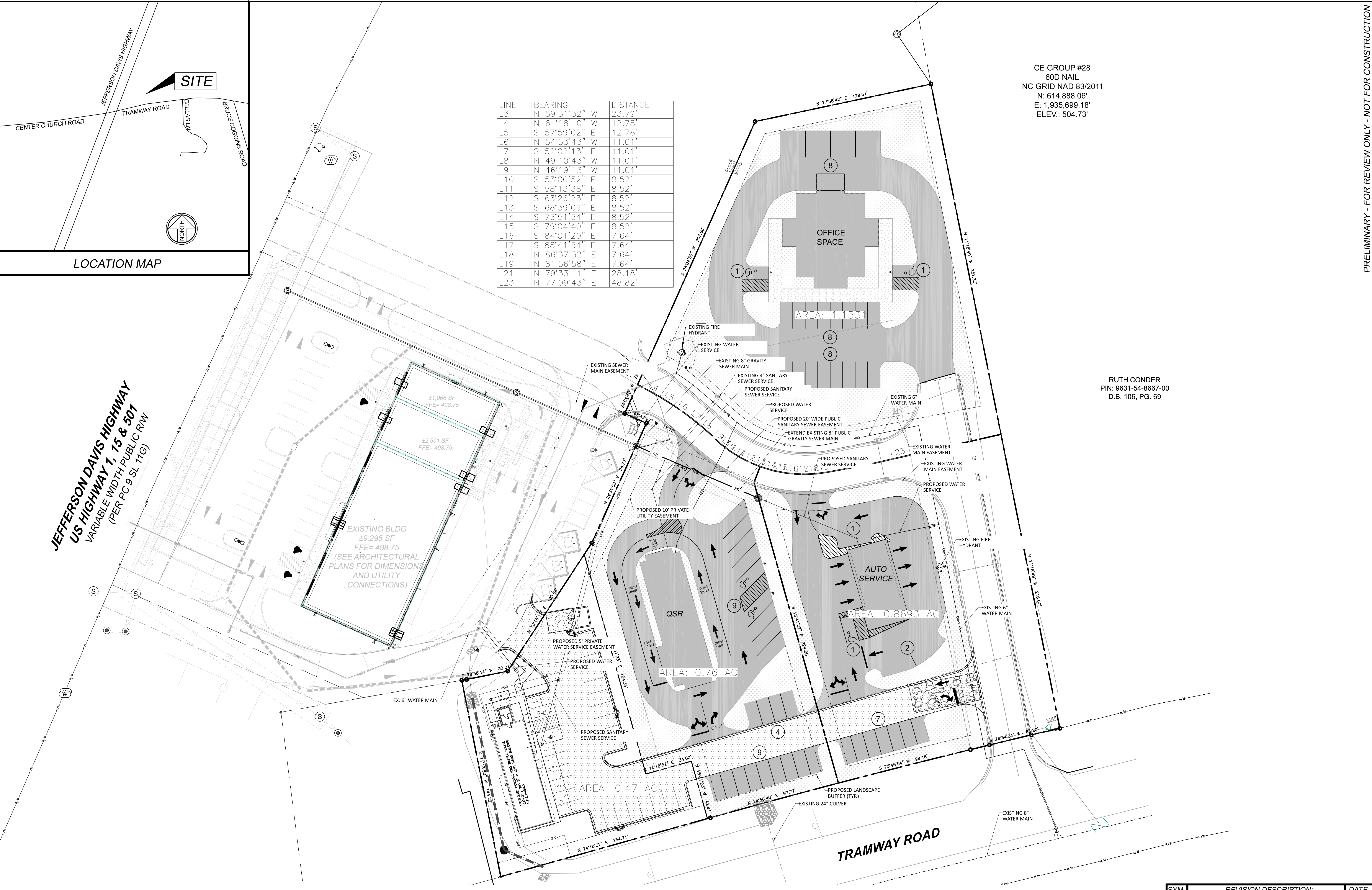


**JEFFERSON DAVIS HIGHWAY
US HIGHWAY 1, 15 & 501**
VARIABLE WIDTH PUBLIC RW
(PER PC 9-SL 11G)

LINE	BEARING	DISTANCE
L3	N 59°31'32" W	23.79'
L4	N 61°18'10" W	12.78'
L5	S 57°59'02" E	12.78'
L6	N 54°53'43" W	11.01'
L7	S 52°02'13" E	11.01'
L8	N 49°10'43" W	11.01'
L9	N 46°19'13" W	11.01'
L10	S 53°00'52" E	8.52'
L11	S 58°13'38" E	8.52'
L12	S 63°26'23" E	8.52'
L13	S 68°39'09" E	8.52'
L14	S 73°51'54" E	8.52'
L15	S 79°04'40" E	8.52'
L16	S 84°01'20" E	7.64'
L17	S 88°41'54" E	7.64'
L18	N 86°37'32" E	7.64'
L19	N 81°56'58" E	7.64'
L21	N 79°33'11" E	28.18'
L23	N 77°09'43" E	48.82'

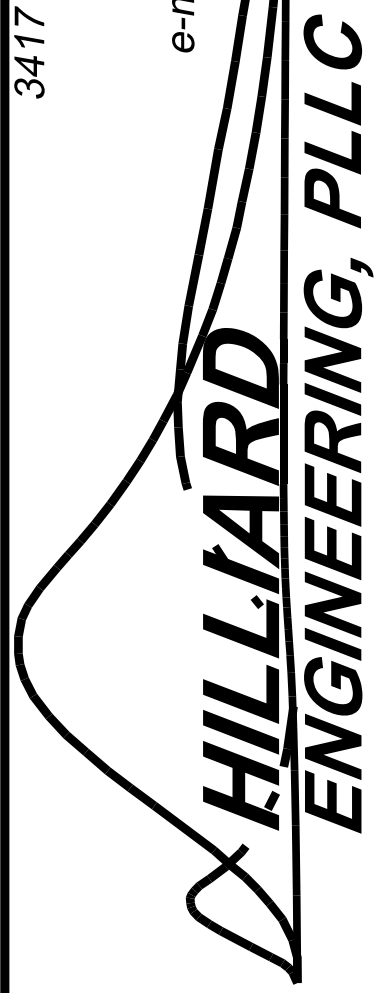
CE GROUP #28
60D NAIL
NC GRID NAD 83/2011
N: 614,888.06'
E: 1,935,699.18'
ELEV.: 504.73'



RUTH CONDER
PIN: 9631-54-8667-00
D.B. 106, PG. 69

PRELIMINARY - FOR REVIEW ONLY - NOT FOR CONSTRUCTION
3417 Winterview Circle, Sanford, NC 27330

PO Box 249, Sanford, NC 27331
Phone: (919) 352-2834
e-mail: jhilliard@hilliardengineering.com
NC License #: P-0836



MASTER PLAN

TRAMWAY NORTH
CITY OF SANFORD, NORTH CAROLINA

DESIGNED BY:	JEH
DRAWN BY:	JEH
APPROVED BY:	JEH
SHEET:	C0.0
	CIVIL

SYM.	REVISION DESCRIPTION:	DATE:
1		
2		
3		
4		
5		
6		

